

EMSA's Integrated Maritime Services

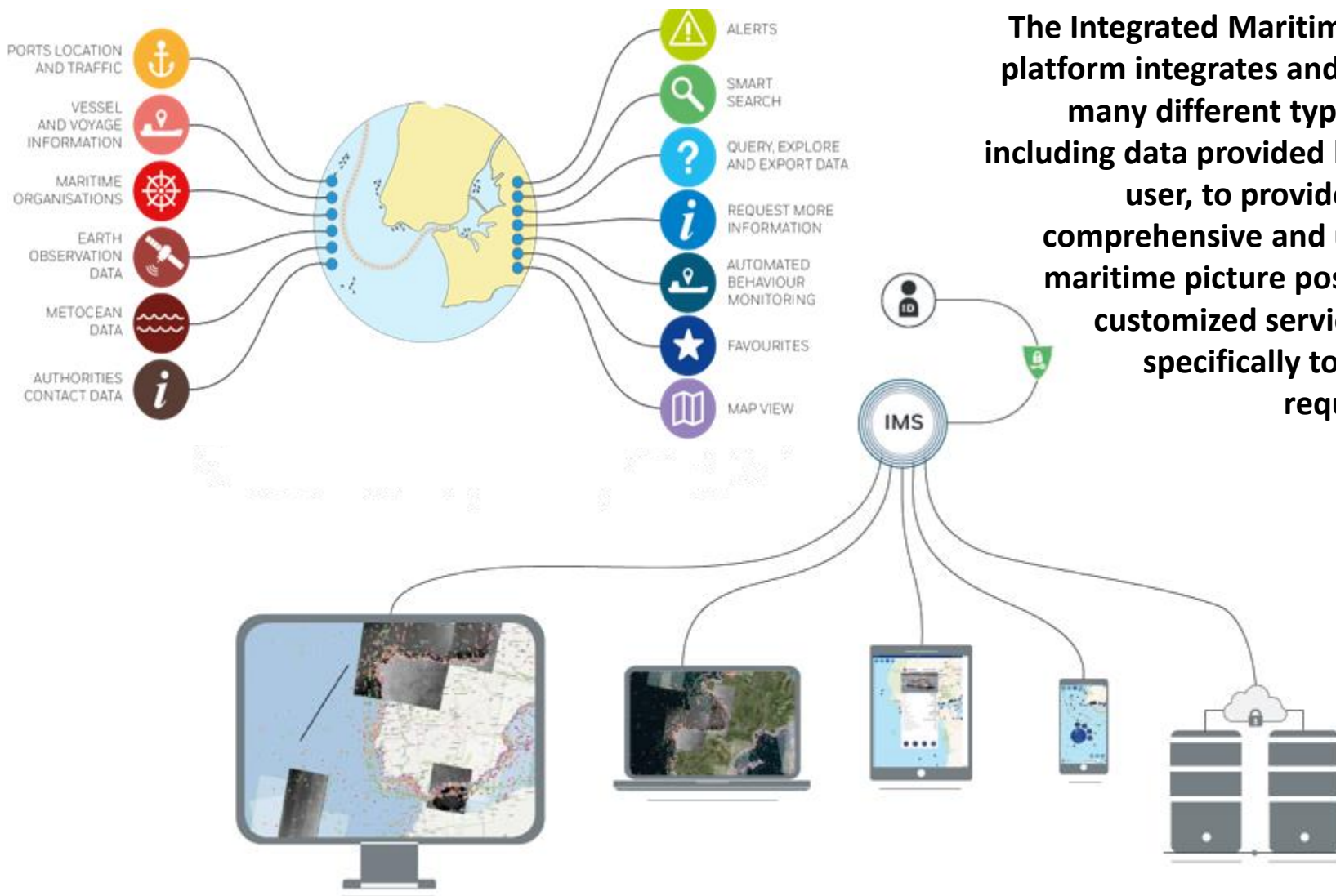
Improving Operational Maritime Awareness by Integration and Sharing

Lukasz Bibik, C.4.1

Lisbon, 09 October 2018



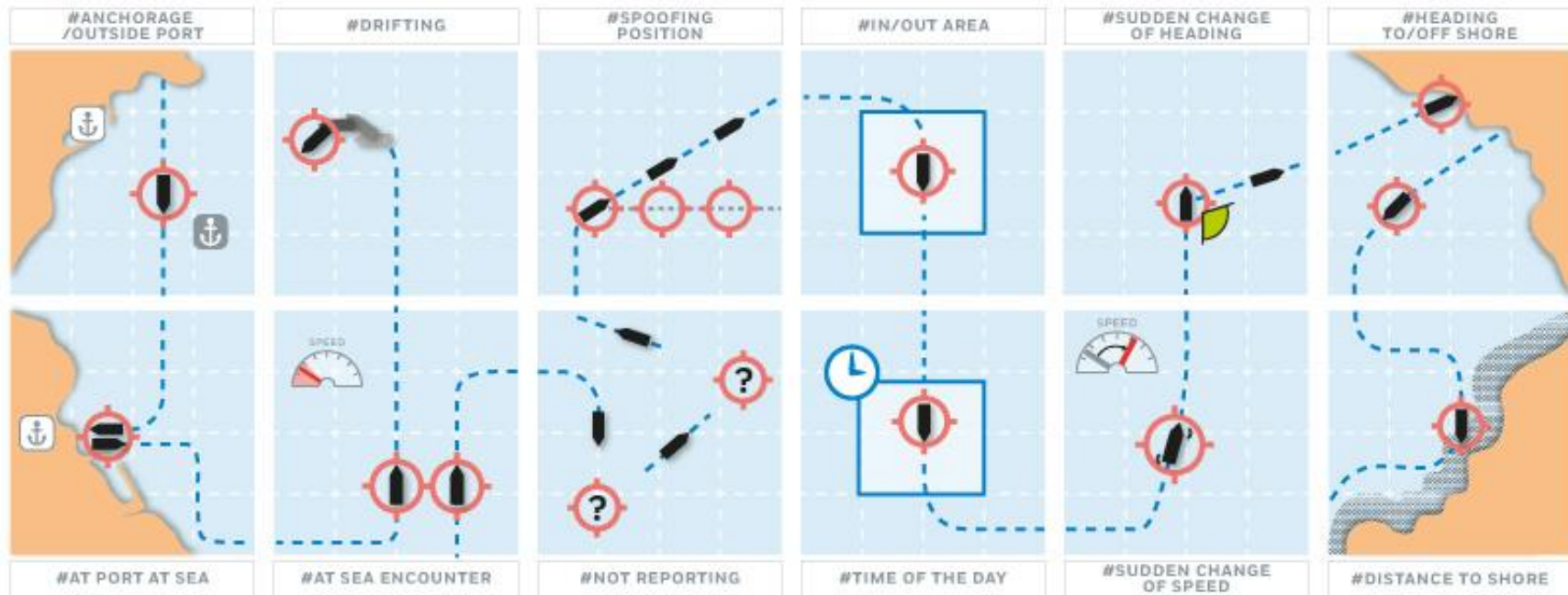
IMS - information layers and interfaces



The Integrated Maritime Services platform integrates and combines many different types of data, including data provided by the end user, to provide the most comprehensive and up-to-date maritime picture possible for a customized service tailored specifically to the user's requirements.

- Configurable, voluntary, functionalities, *promoting regional, national and local cooperation, providing an enhanced maritime picture*, using the integration capability, following the agreed access rights and responding to the users specific needs.
- These functionalities foster the *sharing and exchange of data* between different users and applications and provide *additional, complementary and supportive tools*. They do not replace any existing systems and mandatory system functionalities.
- IMS are offered to EU Member States and EU Bodies, following a *functional approach*, i.e. IMS are offered to *all authorities/organisations executing functions in the maritime domain*.

- Administrative part (access) managed ***by the designated Points of Contact (PoC).***
- ***EMSA Contact point-*** ims@emsa.europa.eu
- ***Governance/ Strategy*** via ***HIGH LEVEL STEERING GROUP*** for Governance of the Digital Maritime System and Services.
- Support is provided via ***Maritime Support Services*** (MSS), EMSA's 24/7 PoC.



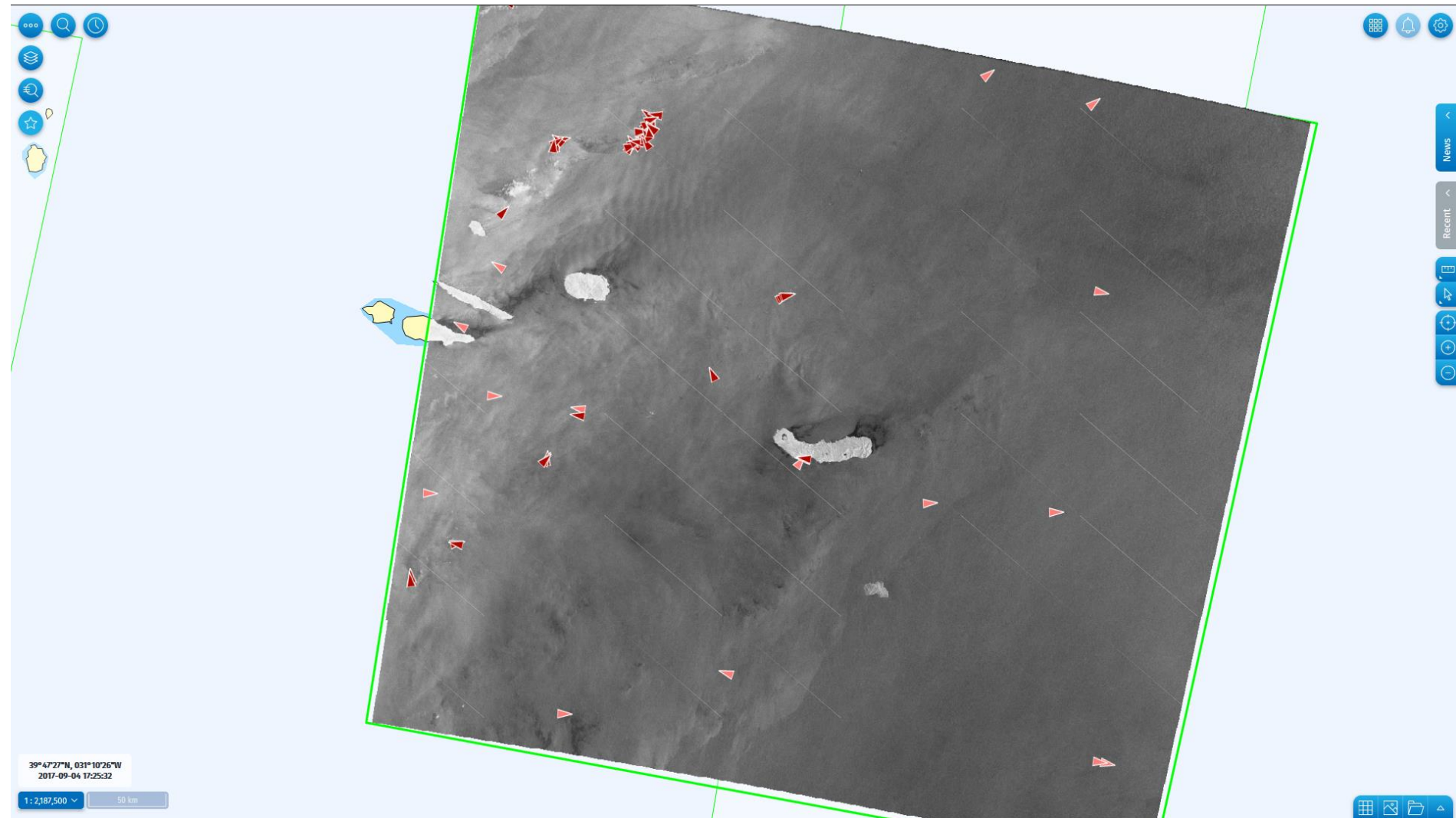
Automated Behaviour Monitoring (ABM) is a computer, rule-based system that analyses ship positions for the automatic detection of abnormal and/or specific vessel behaviour. The purpose of ABM is to support EMSA's Integrated Maritime Service (IMS) users in their maritime surveillance functions, by providing an enhanced situational picture in near real time.



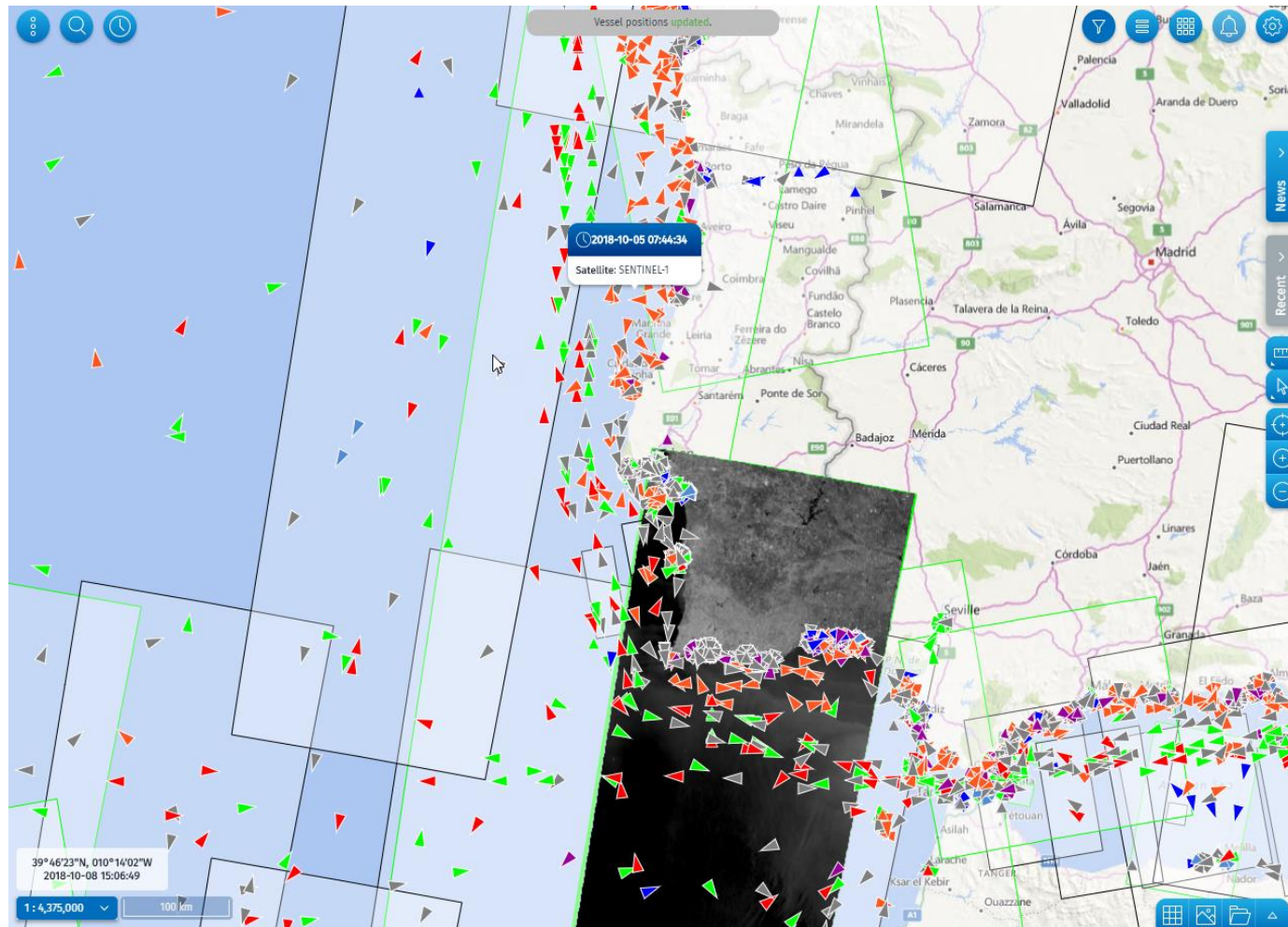
CMS - Optical EO data example



CMS - Correlated vs non-correlated targets



Live demo of the IMS





 twitter.com/emsa_lisbon
 facebook.com/emsa.lisbon

 **EMSA**
European Maritime Safety Agency